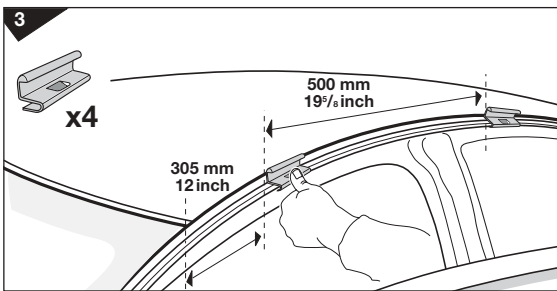
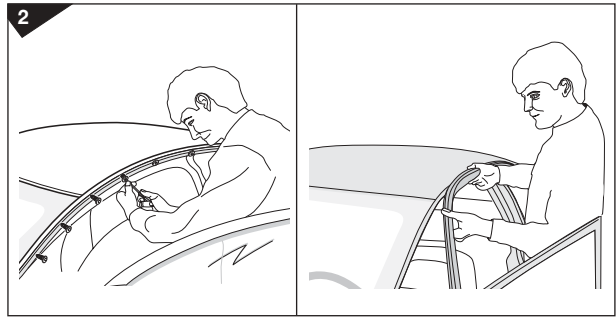
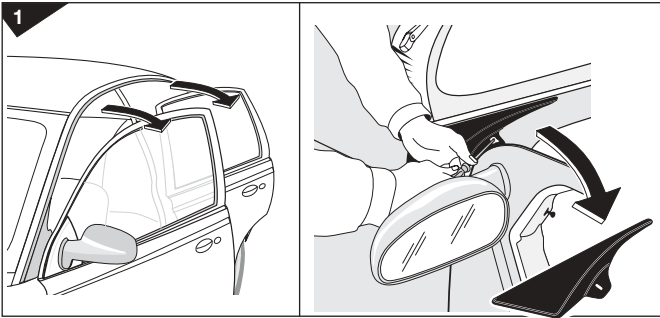
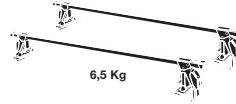


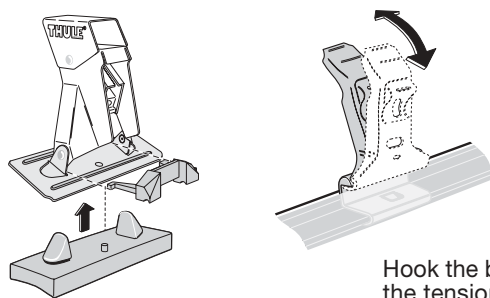
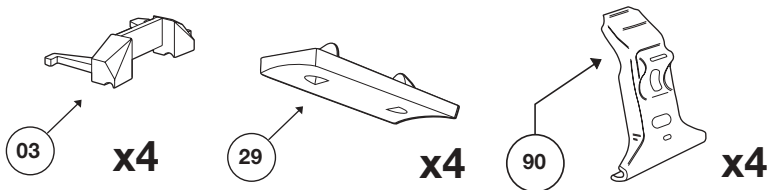
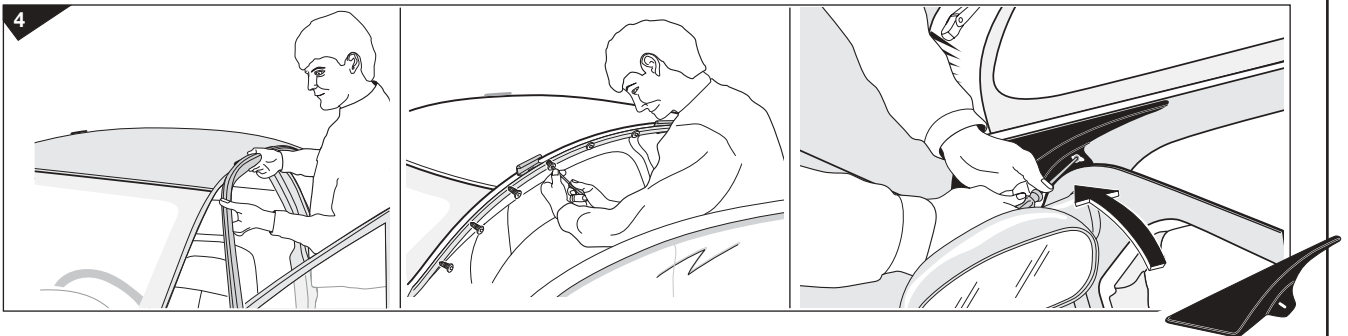
# Thule System Kit 2060

SATURN 4-dr, 96-

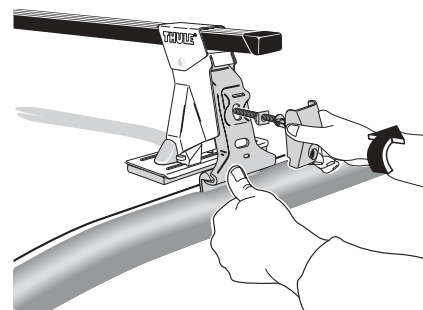


Before the load carrier can be fitted, tensioning attachments must first be mounted. **The tensioning attachments should always be left on the vehicle.**

1. Open the doors. Remove the plastic cover behind the door. Unscrew the TORX screw (1 off) using **TORX tool 15** and remove the cover.
2. Unscrew the 6 TORX screws which keep the plastic moulding in place. Bend the moulding out a bit as shown in the picture.
3. Press the tensioning attachment onto the moulding. The rearmost attachment must be pressed on and then slid back to the correct position.
4. Re-fit the moulding and the plastic cover.



Hook the brackets into place in the tensioning attachments.



Front	Rear
860 mm / 34 inch	850 mm / 33 1/2 inch